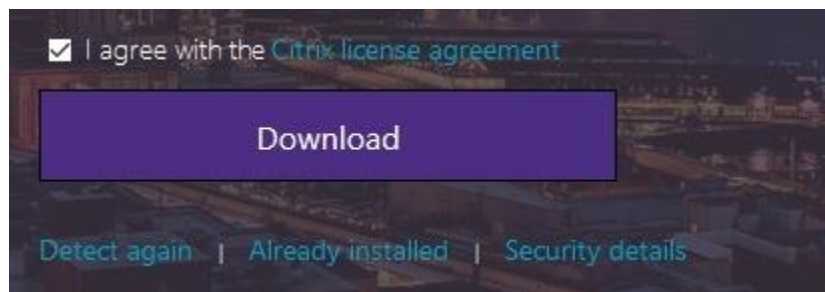
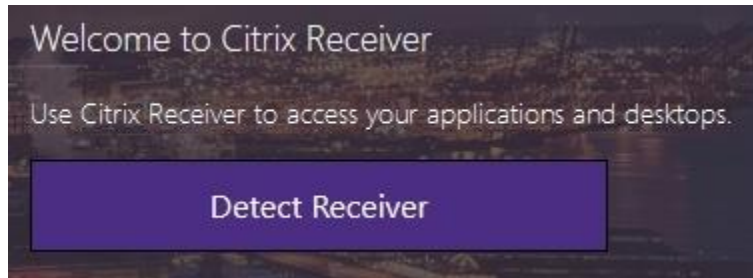


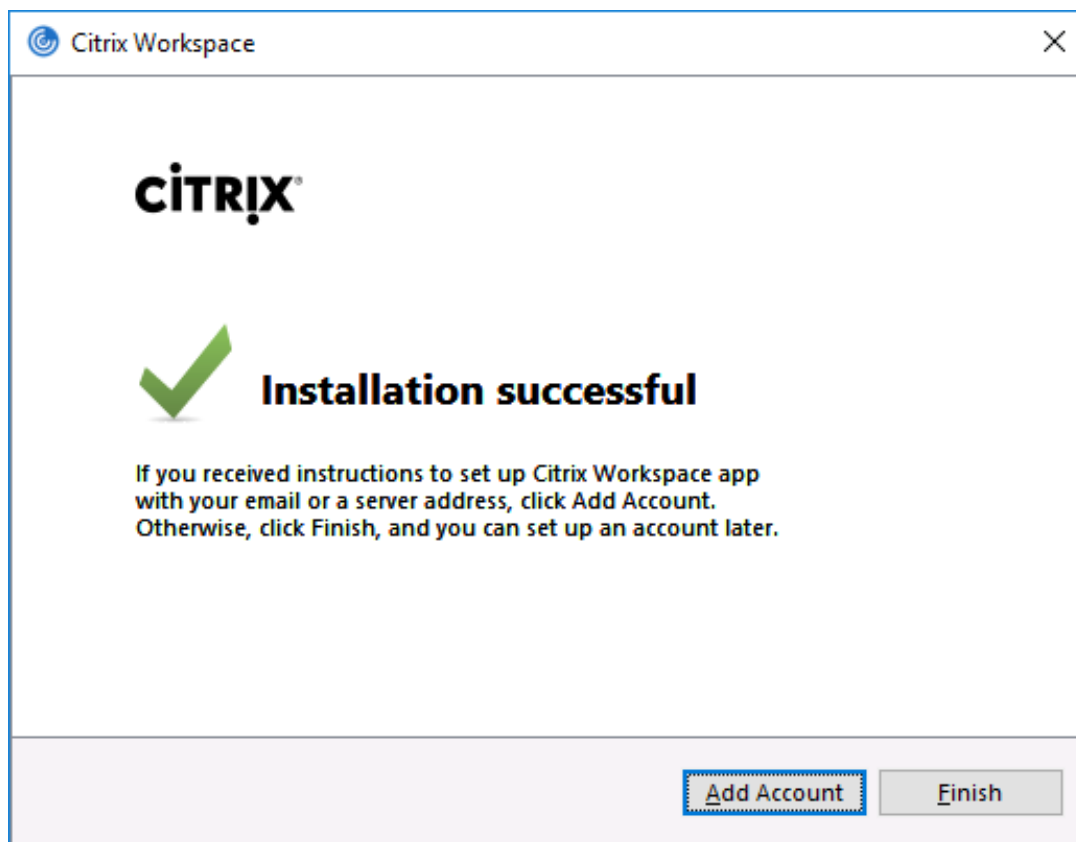
Using CBE Citrix Applications

(Access to CBE Citrix off campus requires the use of [UW OnNet VPN](#))

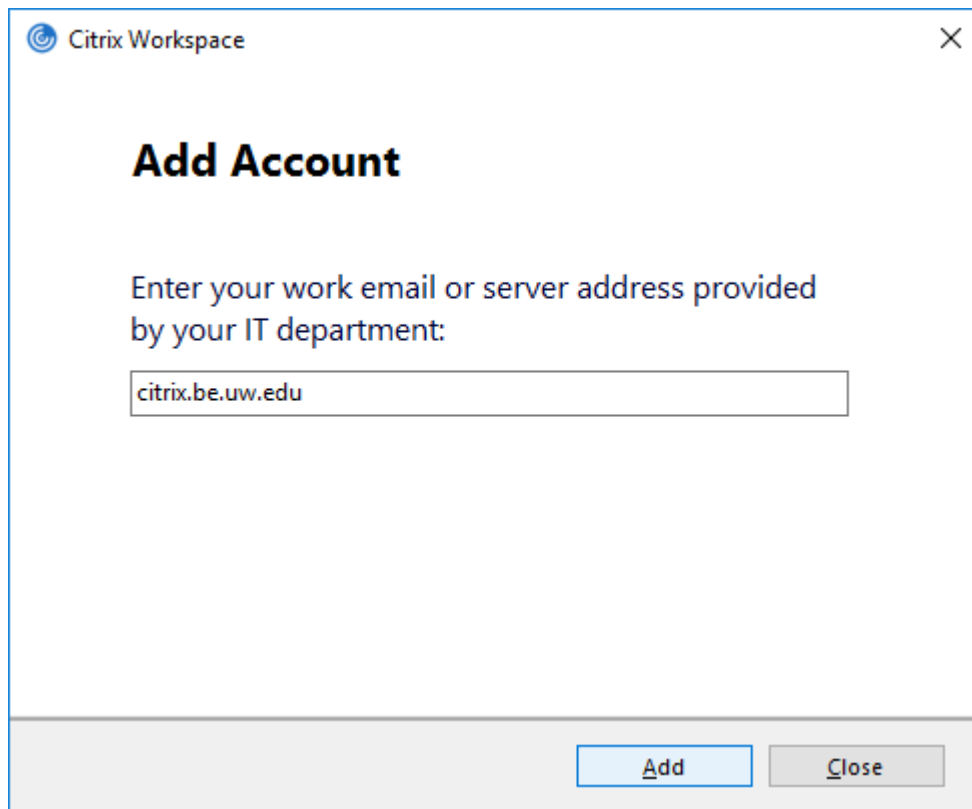
- 1) Open an internet browser and go to <https://citrix.be.uw.edu>
- 2) Click **Detect Receiver**. Check box **I agree..**, then click **Download**.



- 3) Install the downloaded **Citrix Workspace** file. At the end of the Citrix Workspace installation, click **Add Account**:



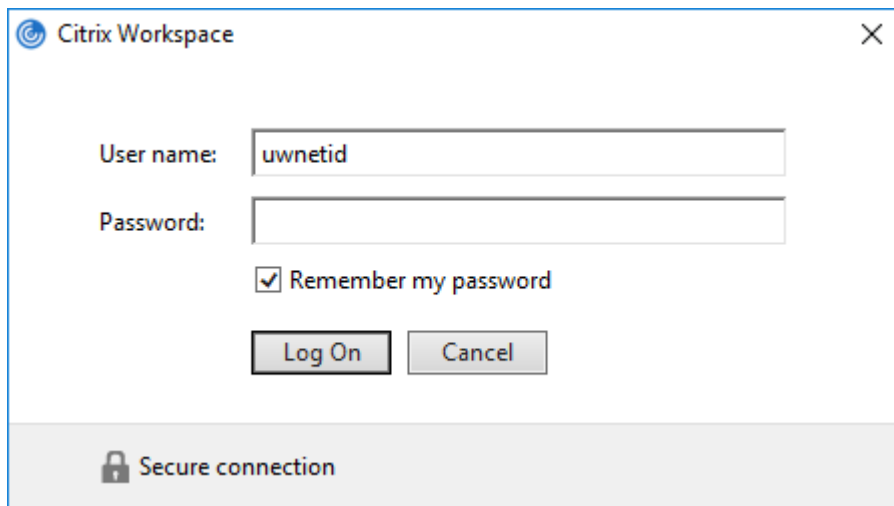
4) Enter server address: **citrix.be.uw.edu**.



The image shows a Citrix Workspace window titled "Add Account". The window contains the following elements:

- Header: Citrix Workspace logo and title bar with a close button (X).
- Section: **Add Account**
- Text: "Enter your work email or server address provided by your IT department:"
- Text Input: A text box containing "citrix.be.uw.edu".
- Buttons: "Add" and "Close" buttons at the bottom right.

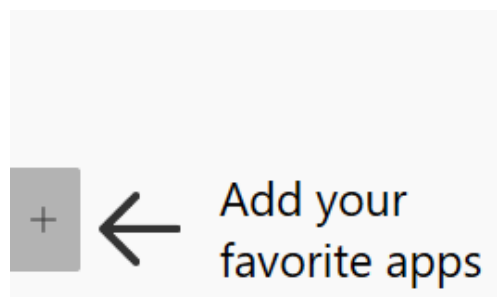
5) Login with your UW netid credentials.



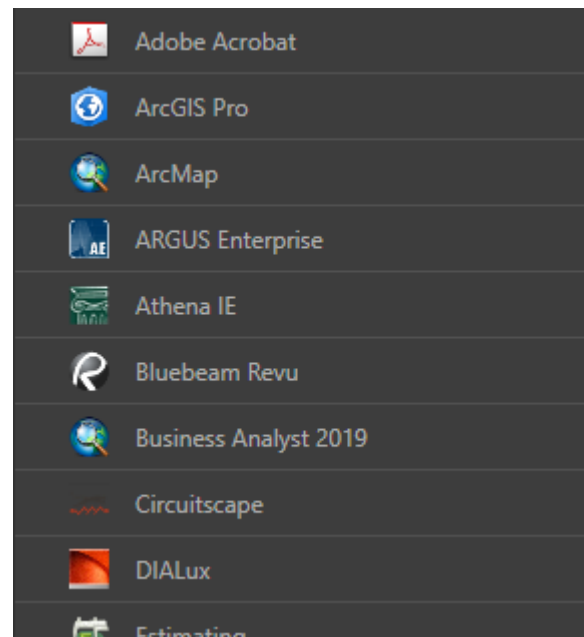
The image shows a Citrix Workspace login dialog box with the following elements:

- Header: Citrix Workspace logo and title bar with a close button (X).
- Form Fields:
 - User name: Input field containing "uwnetid".
 - Password: Input field.
 - Checkbox: Remember my password.
- Buttons: "Log On" and "Cancel" buttons.
- Footer: A grey bar with a lock icon and the text "Secure connection".

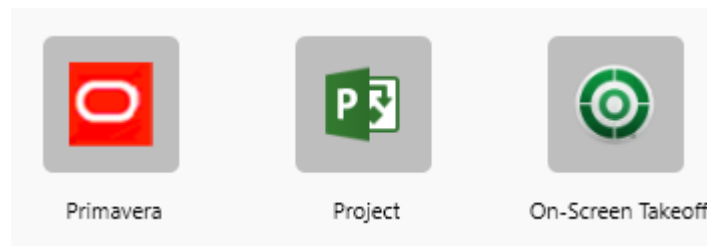
6) Click the + next to *Add your favorite apps*.



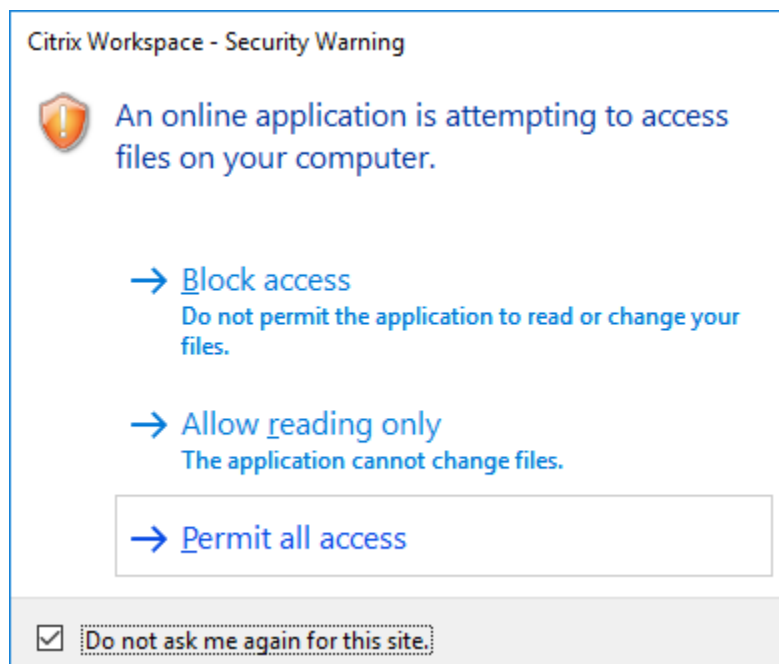
7) Choose the applications that you want to add to your Citrix Workspace client.



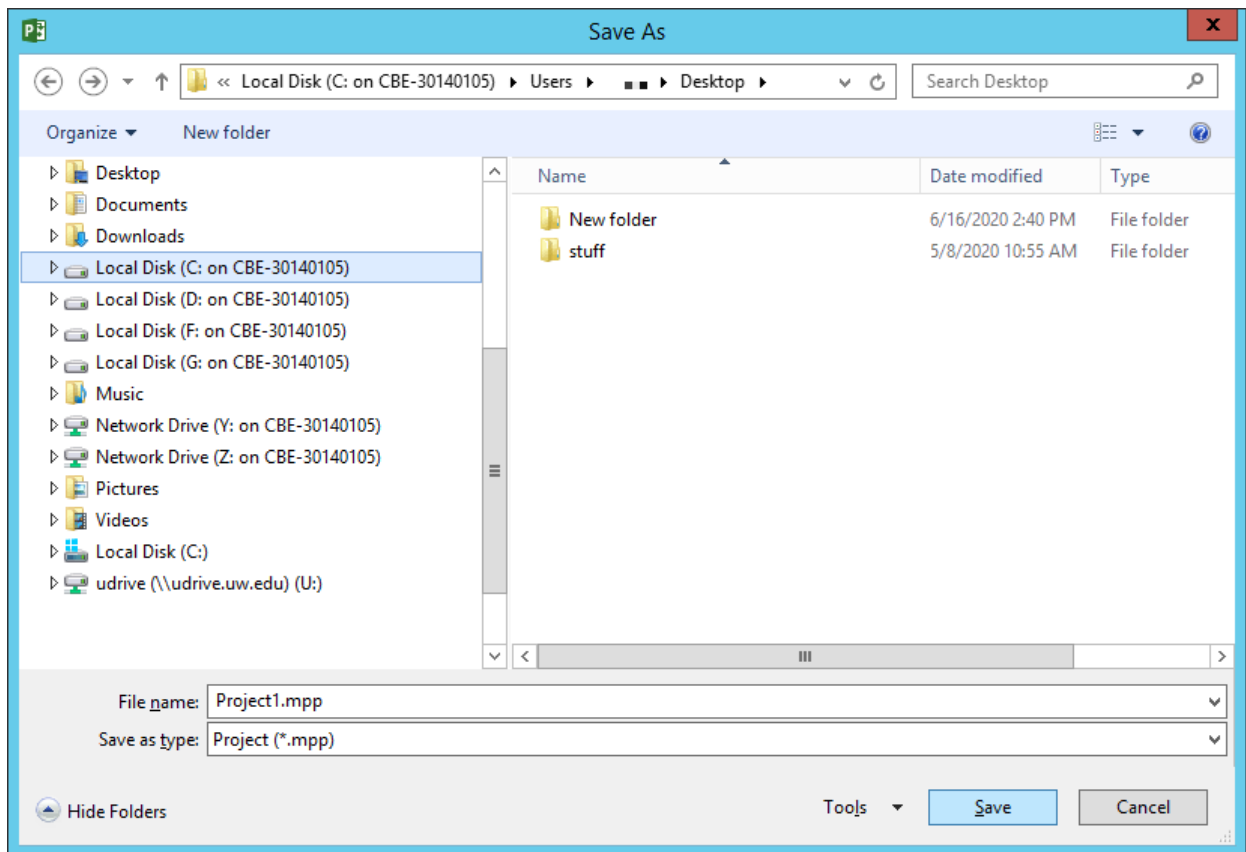
8) Your Citrix apps will now show up in your Citrix Workspace. Click on the Citrix Workspace icon in your taskbar or start menu anytime you want to access them.



9) After launching a Citrix app, you will receive a file security warning. Click “**Permit all Access**” and “**Do not ask me again..**”.

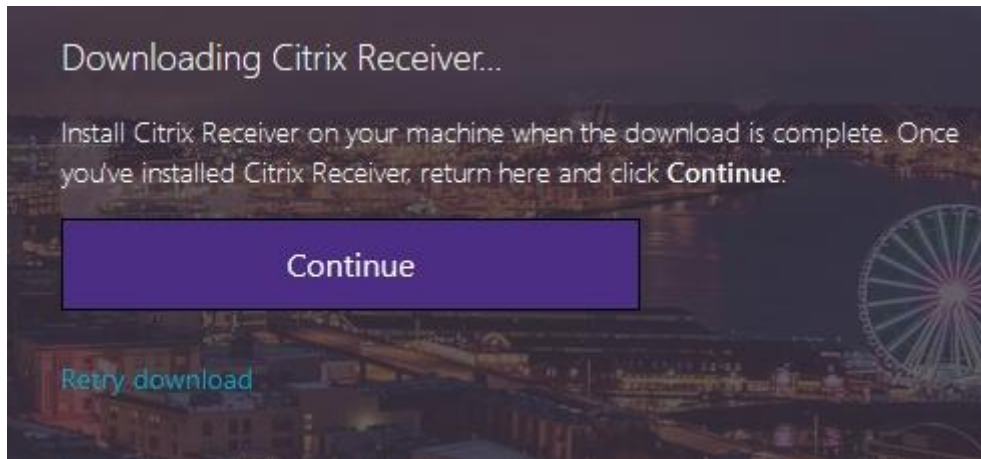


10) Save files to your **Local Disk (C: on {computername})** or U drive only. When opening files from your computer in Citrix Apps, browse to this location.

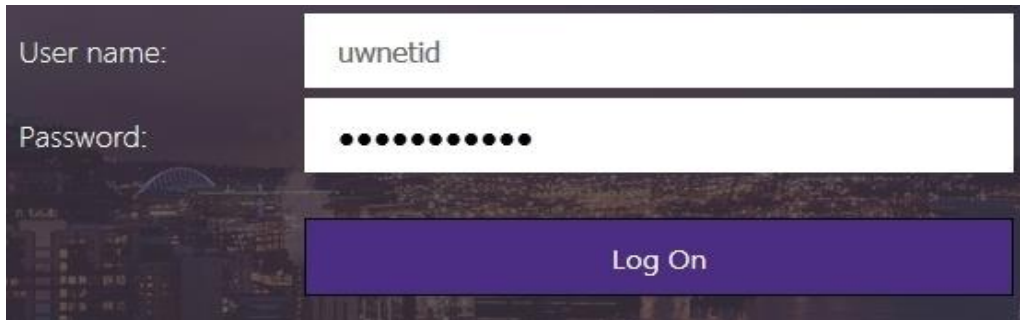


- If you prefer to launch Citrix applications via your browser, follow these steps:

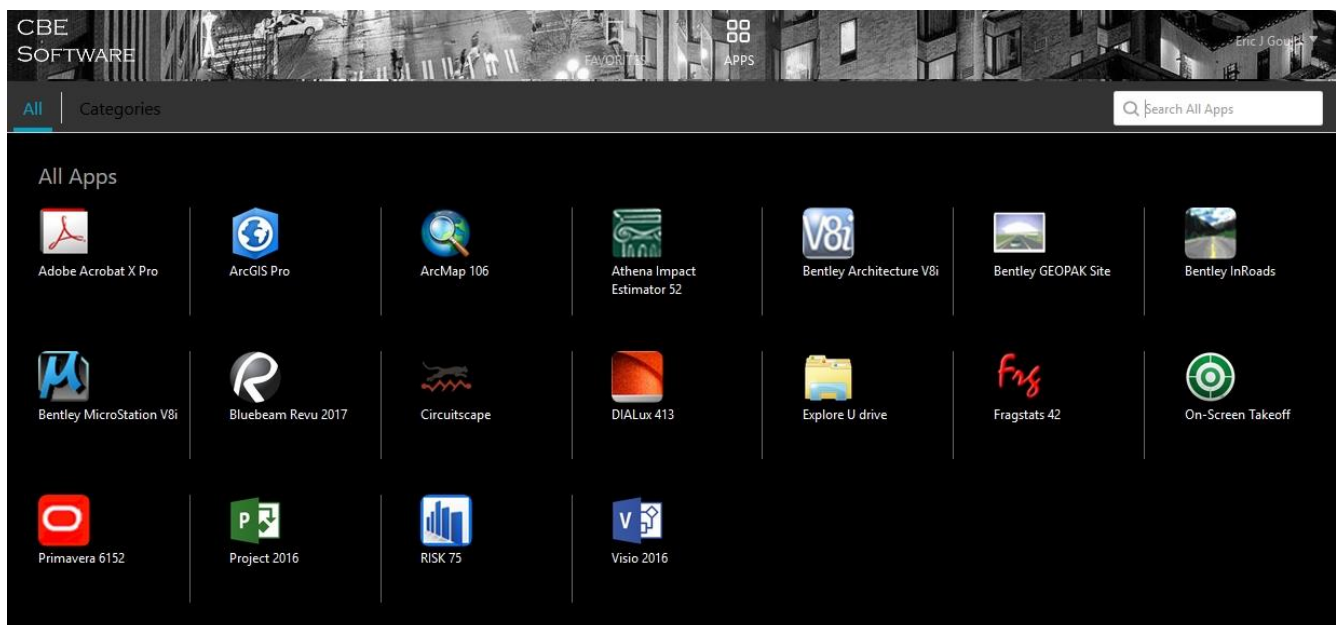
11) Go back to the citrix.be.uw.edu webpage and click *Continue*.



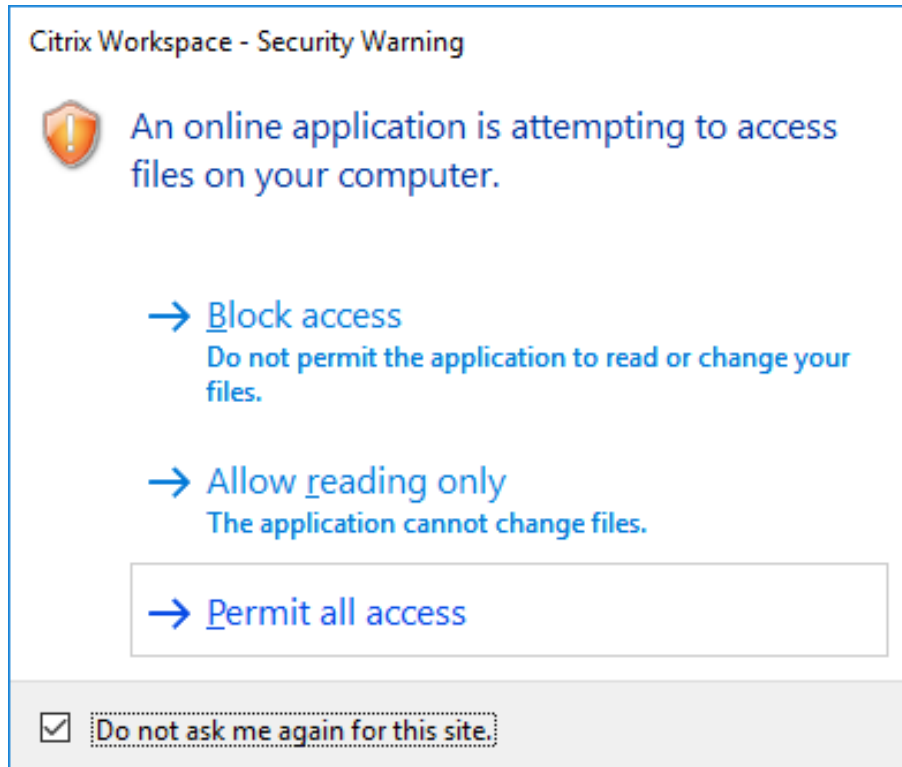
12) Login with your UW netid credentials.



13) Click on the desired software to launch.



- 14) After launching a Citrix app, you will receive a file security warning. Click “**Permit all Access**” and “**Do not ask me again..**”.



- 15) Save files to your **Local Disk (C: on {computer name})** or U drive only. When opening files from your computer, browse to this location.

