

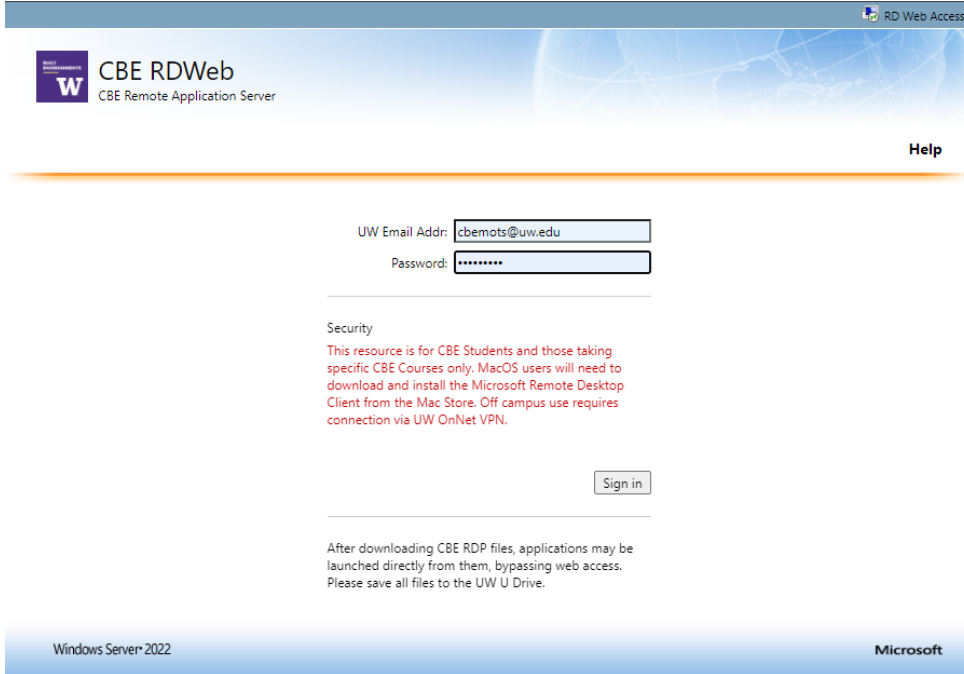
# Using CBE RDWeb Server

Off campus access requires connection to UW OnNet VPN.

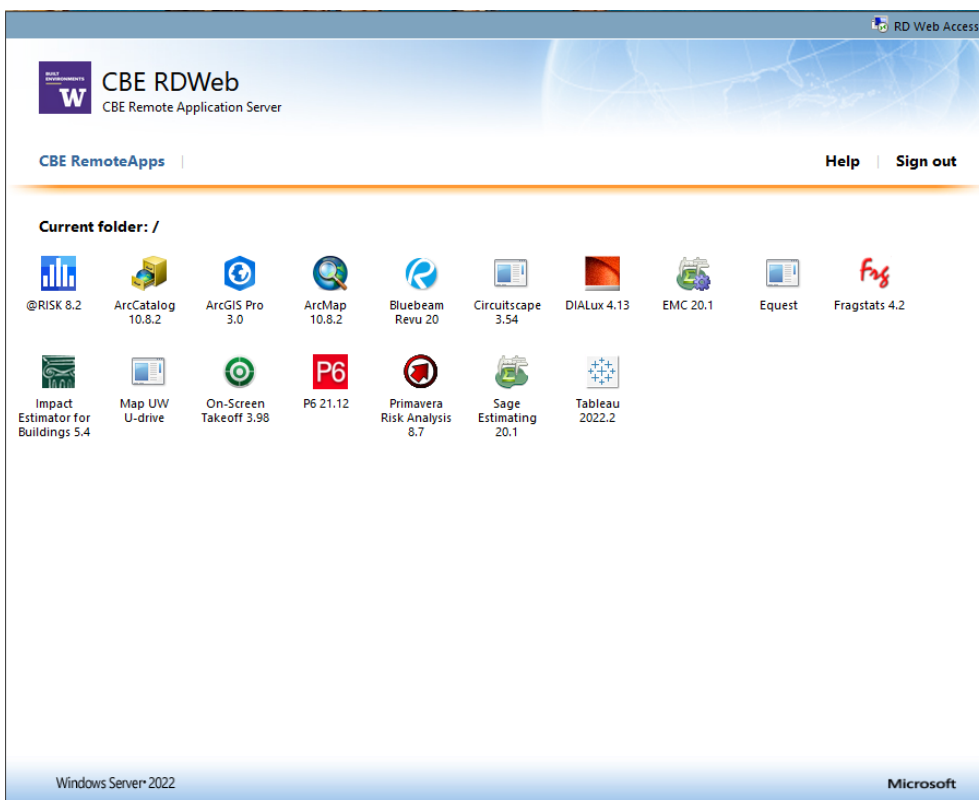
<https://softy.cac.washington.edu/HuskyOnNet/>

MacOS users will need to download the Microsoft Remote Desktop client from the Mac Store

1) Open a browser and connect to <https://rdweb.be.uw.edu>. Enter your UW email address and password to login.

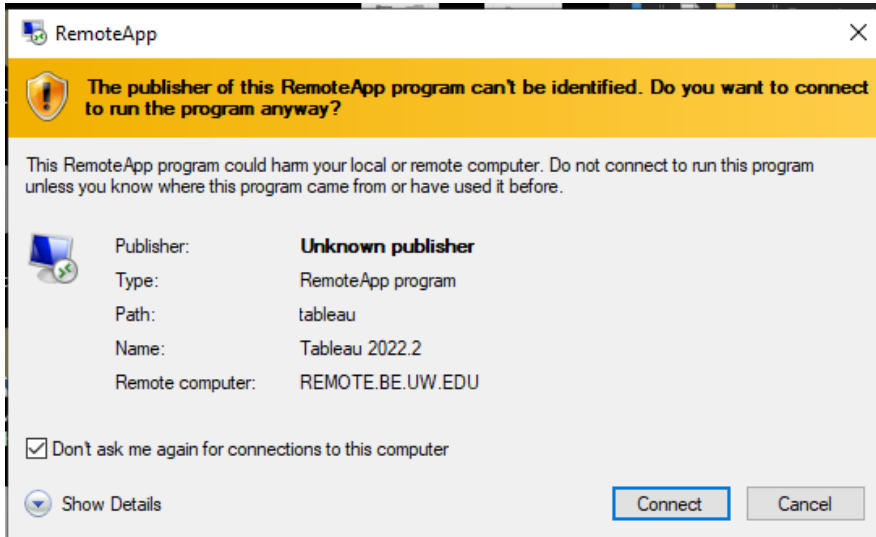


2) Left click on an application, it will download an "RDP" application-specific file. In your browser, choose "Always open files of this type", and "Open". **After downloading the rdp file, the application can be launched by it, bypassing the website.**

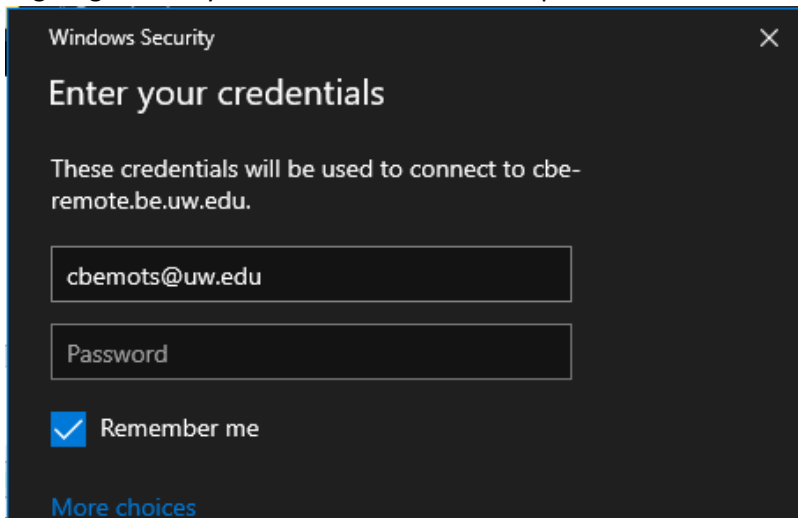


3) You are presented with a security window, an additional authentication request, and another security window.

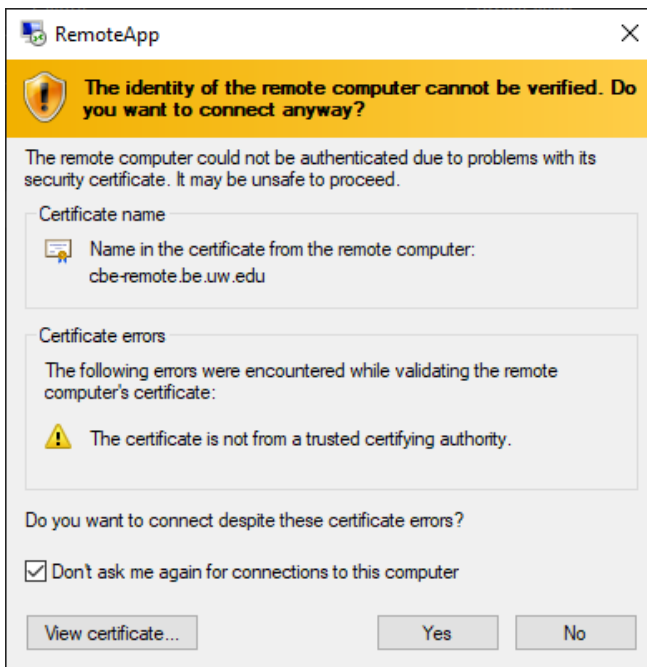
Check "Don't ask me again for connections to this computer", then click "Connect".



Login again with your UW email address and password. Check "Remember me", then click "OK".



You may see a second security window stating "The identity of the remote computer cannot be verified". Check "Do not ask me again for connections to this computer", then click "YES".



4) Your Application launches.

5) Local files may be accessed via the drive labeled “**C on <computername>**”. Save all files there or UW “UDRIVE”.

